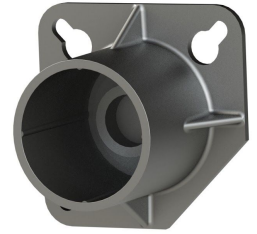




RHINO Form Mounting Plate (FMP)

The FMP series is designed to protect the internal threads of the coupler, to permit proper alignment of coupler system and to allow easy access after pour for reinforced concrete construction in segmental pour applications. After the forms are stripped, the FMP has a plastic tab that can be removed by a screwdriver exposing the contamination-free internal threads.



Features and Benefits

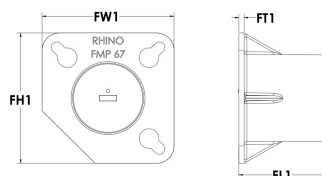
- Designed to keep water, dirt, and concrete slurry out of the coupler during pour.
- Mounting holes allow for easy attachment to forms.
- Plate can be mounted to form prior to assembly to coupler
- After concrete pour and forms stripped, easy twist off tab allows for access to coupler threads
- Allows for proper alignment of coupler/rebar interface
- Designed for specific RHINO Couplers - see chart



Typical Applications

- Segmental Pour Applications
- Bridge Decks
- Highway and Bridge Slabs

Part Number	Coupler	Plate Length (FL1)	Plate Width (FW1)	Plate Height (FH1)	Plate Thickness (FT1)
FMP4	RS13	1.50 in	2.25 in	2.25 in	.090 in
FMP5	RS16,SS13,SS16	1.50 in	2.25 in	2.25 in	.090 in
FMP6	RS19	1.50 in	2.25 in	2.25 in	.090 in
FMP7	RS22, SS19,SS22	1.50 in	2.25 in	2.25 in	.090 in
FMP8	RS25,RS28,SS25,SS28	1.50 in	2.50 in	2.50 in	.090 in
FMP10	RS32,SS32	1.50 in	2.80 in	2.80 in	.090 in
FMP11	RS36, SS36	1.50 in	2.80 in	2.80 in	.090 in



DIMENSIONS ARE FOR REFERENCE ONLY.